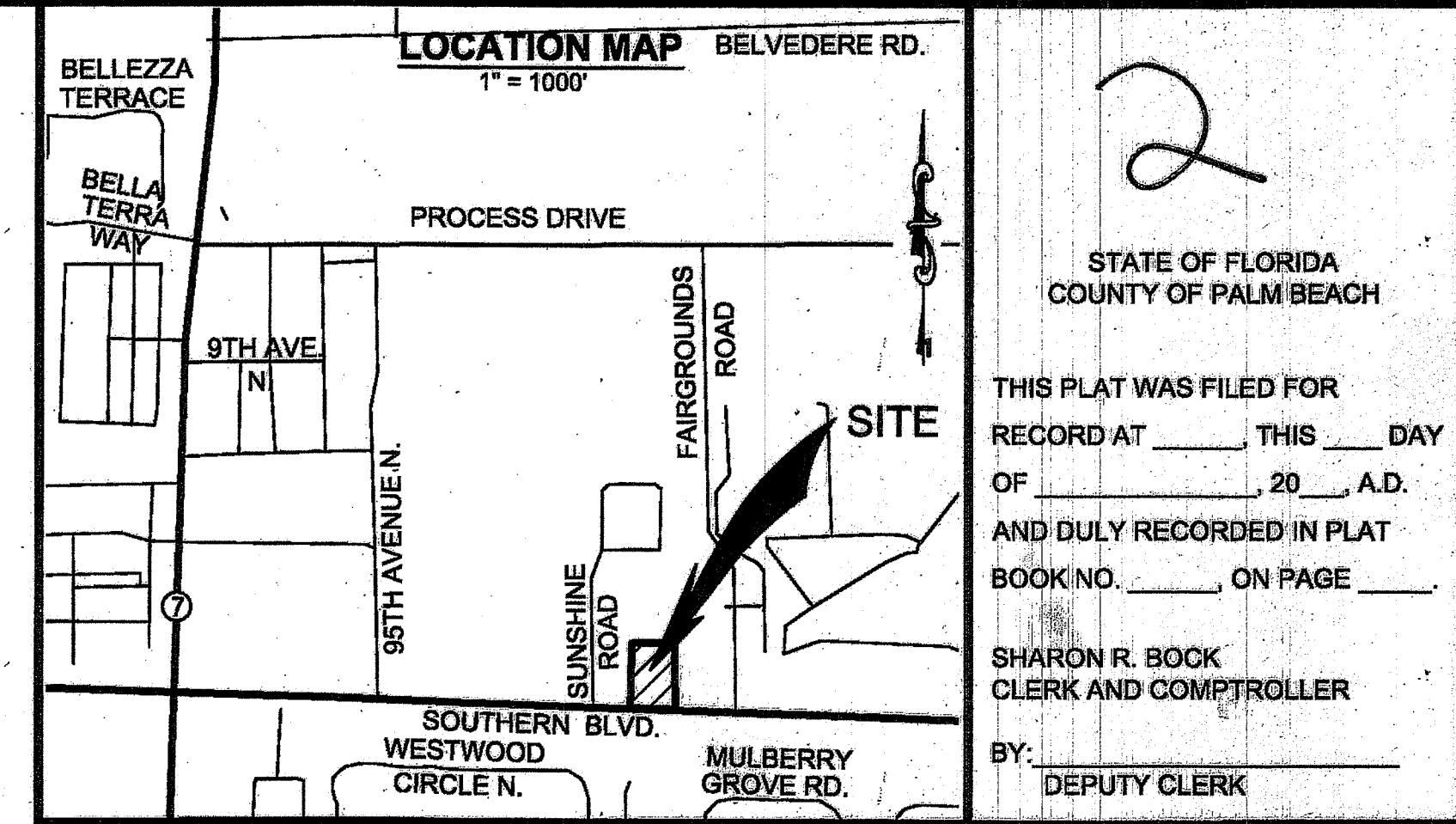


# ASCENSION ROYAL PALM

BEING A REPLAT OF A PORTION OF TRACTS 18 AND 19, BLOCK 8,  
PALM BEACH FARMS COMPANY PLAT NO. 3, RECORDED IN PLAT BOOK 2, PAGE 45,  
OF THE PUBLIC RECORDS OF PALM BEACH COUNTY, FLORIDA,  
LYING IN SECTION 31, TOWNSHIP 43 SOUTH, RANGE 42 EAST,  
VILLAGE OF ROYAL PALM BEACH, PALM BEACH COUNTY, FLORIDA

SHEET 2 OF 2      NOVEMBER, 2016

PORTION OF  
TRACT 18, BLOCK 8  
PALM BEACH FARMS COMPANY PLAT NO. 3  
PLAT BOOK 2, PAGE 45-54  
NOT A PART OF THIS PLAT

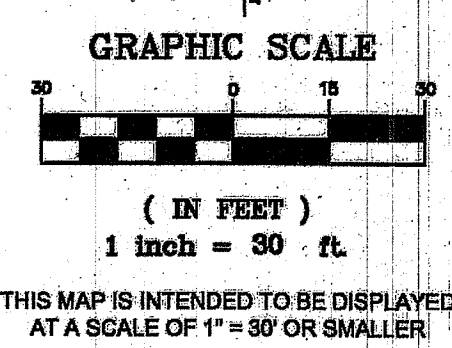
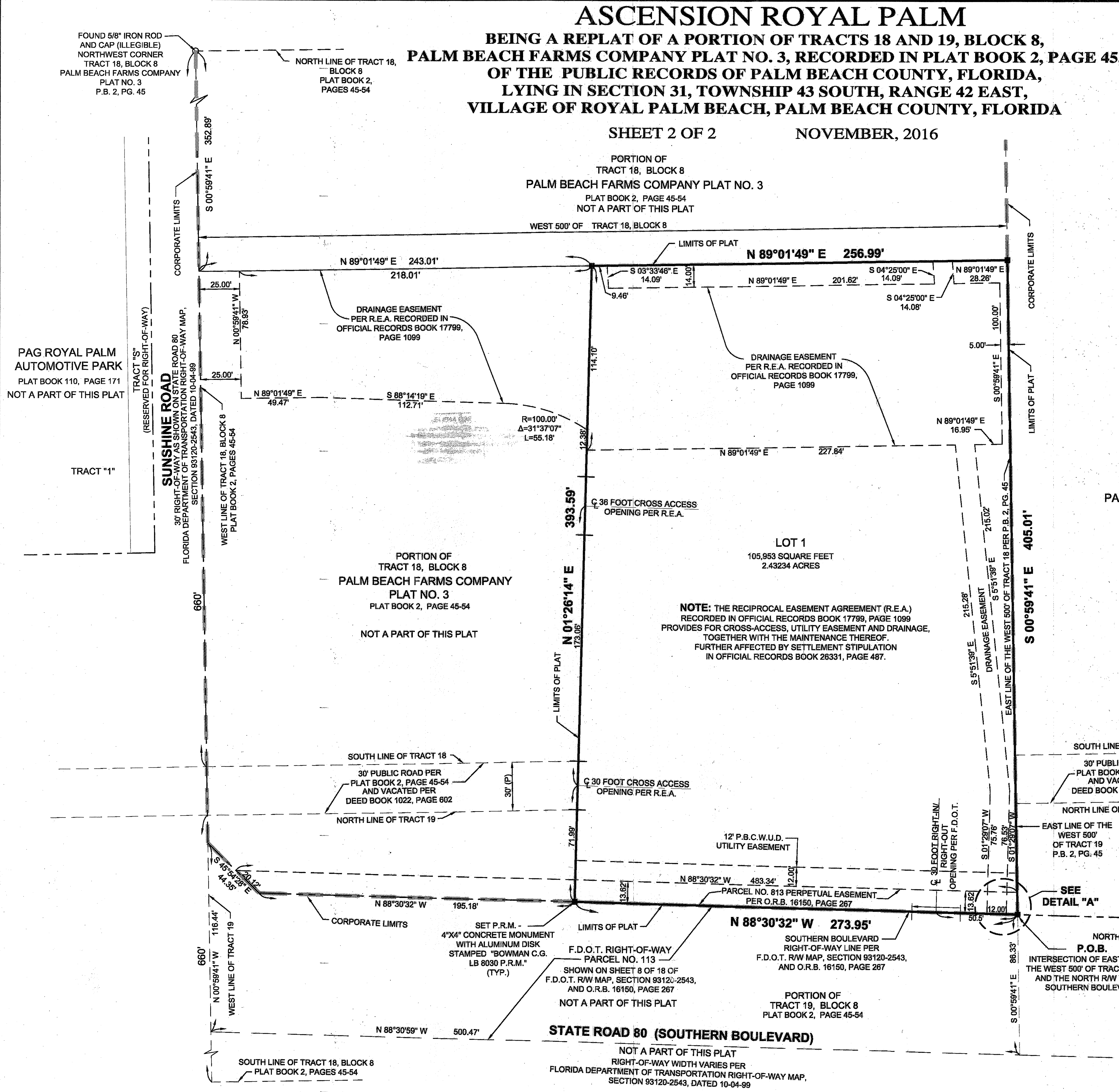


STATE OF FLORIDA  
COUNTY OF PALM BEACH

THIS PLAT WAS FILED FOR  
RECORD AT \_\_\_\_\_ THIS \_\_\_\_\_ DAY  
OF \_\_\_\_\_, 20\_\_\_\_, A.D.  
AND DULY RECORDED IN PLAT  
BOOK NO. \_\_\_\_\_ ON PAGE \_\_\_\_\_

SHARON R. BOCK  
CLERK AND COMPTROLLER

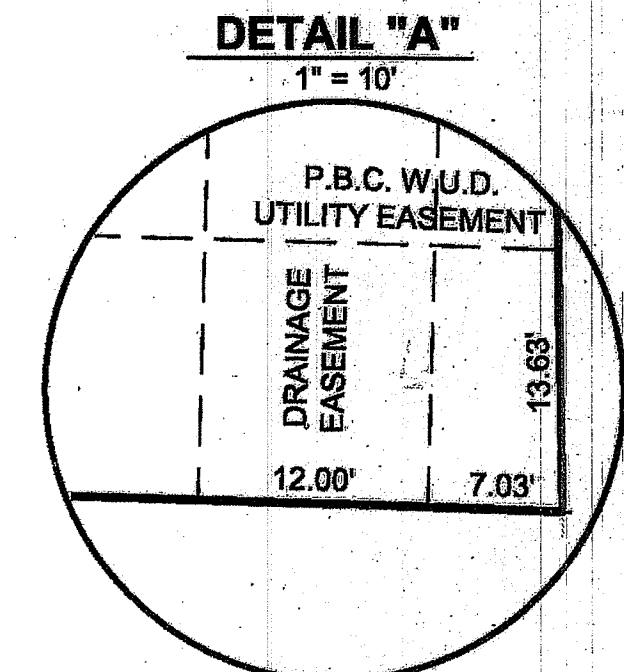
BY: \_\_\_\_\_  
DEPUTY CLERK



PORTION OF  
TRACT 18, BLOCK 8  
PALM BEACH FARMS COMPANY  
PLAT NO. 3  
PLAT BOOK 2, PAGE 45-54  
NOT A PART OF THIS PLAT

- LEGEND**
- A.D. = ANNO DOMINION
  - C = CENTERLINE
  - D.O.T. = DEPARTMENT OF TRANSPORTATION
  - F.D.O.T. = FLORIDA DEPARTMENT OF TRANSPORTATION
  - F.S. = FLORIDA STATUTE
  - INC. = INCORPORATED
  - LB. = LICENSED BUSINESS
  - (M) = MEASURED DISTANCE
  - NO. = NUMBER
  - NAD = NORTH AMERICAN DATUM
  - O.R.B. = OFFICIAL RECORDS BOOK
  - (P) = PLAT DATA
  - P.E. = PROFESSIONAL ENGINEER
  - PG. = PAGE
  - P.B. = PLAT BOOK
  - P.B.C.W.U.D. = PALM BEACH COUNTY WATER UTILITIES DEPARTMENT
  - P.O.B. = POINT OF BEGINNING
  - P.R.M. = PERMANENT REFERENCE MONUMENT
  - P.S.M. = PROFESSIONAL SURVEYOR AND MAPPER
  - R.E.A. = RECIPROCAL EASEMENT AGREEMENT
  - R/W = RIGHT OF WAY
  - (TYP.) = TYPICAL
  - = SET P.R.M. - 4"X4" CONCRETE MONUMENT WITH ALUMINUM DISK STAMPED "BOWMAN C.G. LB 8030 P.R.M."
  - = FOUND IRON ROD OR PIPE
  - = CORPORATE LIMITS

**NOTE:** THE RECIPROCAL EASEMENT AGREEMENT (R.E.A.) RECORDED IN OFFICIAL RECORDS BOOK 17799, PAGE 1099 PROVIDES FOR CROSS-ACCESS, UTILITY EASEMENT AND DRAINAGE, TOGETHER WITH THE MAINTENANCE THEREOF, FURTHER AFFECTED BY SETTLEMENT STIPULATION IN OFFICIAL RECORDS BOOK 28331, PAGE 487.



## Bowman CONSULTING

PROFESSIONAL SURVEYORS AND MAPPERS, CERTIFICATE NO. LB 8030  
BOARD OF PROFESSIONAL ENGINEERS, CERTIFICATE OF AUTHORIZATION NO. 30482  
BOWMAN CONSULTING GROUP, LTD., INC.  
301 SE OCEAN BLVD., SUITE 301, STUART, FL 34994 PHONE: (772) 283-1413 FAX: (772) 220-7881  
www.bowmanconsulting.com © Bowman Consulting Group, Ltd.